



East Anglia ONE North Offshore Windfarm

Appendix 26.18

Proposed Preliminary Access Concepts

Environmental Statement Volume 3

Applicant: East Anglia ONE North Limited
Document Reference: 6.3.26.18
SPR Reference: EA1N-DWF-ENV-REP-IBR-000363_018 Rev 01
Pursuant to APFP Regulation: 5(2)(a)

Author: Royal HaskoningDHV
Date: October 2019
Revision: Version 1

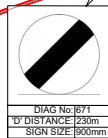
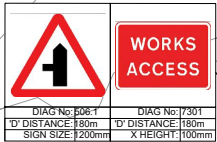
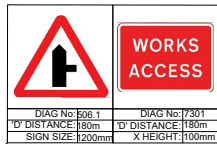
DRAWING No.
TP-PB4842-DR001



VISIBILITY DETAILS
SCALE - 1:2000



ACCESS DETAILS
SCALE - 1:500



ACCESS 1

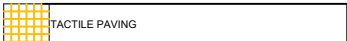
ACCESS 1

NOTES

- Do not scale from this drawing. all dimensions are in metres unless noted otherwise.
- This drawing has been based upon Ordnance Survey Maps and Royal HaskoningDHV can not guarantee the accuracy of data.
- All road markings and signage to conform with the Traffic Signs Regulation and General Directions 2016 and Chapter 8.
- 10' distance is the siting distance of temporary road signs from the closest haul road crossing point/access location.
- Visibility
- X-distance - the set back from the nearest edge of the carriageway from which the access will be taken
- Y-distance - the SSD measured along the nearest edge of the carriageway to its intersection with the centreline of the access.
- SSD - Stopping Sight Distance for design speed of the road.
- All vegetation to be cleared/trimmed within identified visibility envelope.

KEY

- ORDER LIMITS
- PROPOSED EXTENDED CYCLEWAY
- PROPOSED ACCESS BOUNDARY/ROAD MARKINGS
- VISIBILITY SPLAY (SEE VISIBILITY TABLE)
- PROPOSED TEMPORARY ROAD SIGN



| ACCESS 1 - SIZEWELL GAP | | VISIBILITY | |
|---|--|------------|------|
| Posted Speed Limit (PSL) (mph) | | EAST | WEST |
| Required Y-distance SSD for PSL (m) | | 60 | 215 |
| Required Y-distance SSD achievable? | | Yes | Yes |
| 85 th percentile speed (mph) | | 57.1 | |

| | | | | | |
|------|----------|---------------------------------------|----|-----|-----|
| D0.6 | 24.07.19 | PAGE SIZE CHANGED FROM A3 TO A1 | JL | SKT | SKT |
| D0.5 | 07.06.19 | ORDER LIMITS, ACCESS LOCATION UPDATED | JL | SKT | SKT |
| D0.4 | 11.04.19 | ACCESS LOCATION AMENDED | JL | SKT | SKT |
| D0.3 | 11.04.19 | ACCESS LOCATION AMENDED | JL | SKT | SKT |
| D0.2 | 16.11.18 | ORDER LIMITS UPDATED | JL | SKT | ADR |
| D.01 | | FIRST ISSUE | | | |
| REV | DATE | DESCRIPTION | BY | CHK | APP |

REVISIONS

CLIENT



PROJECT

EAST ANGLIA ONE North

TITLE

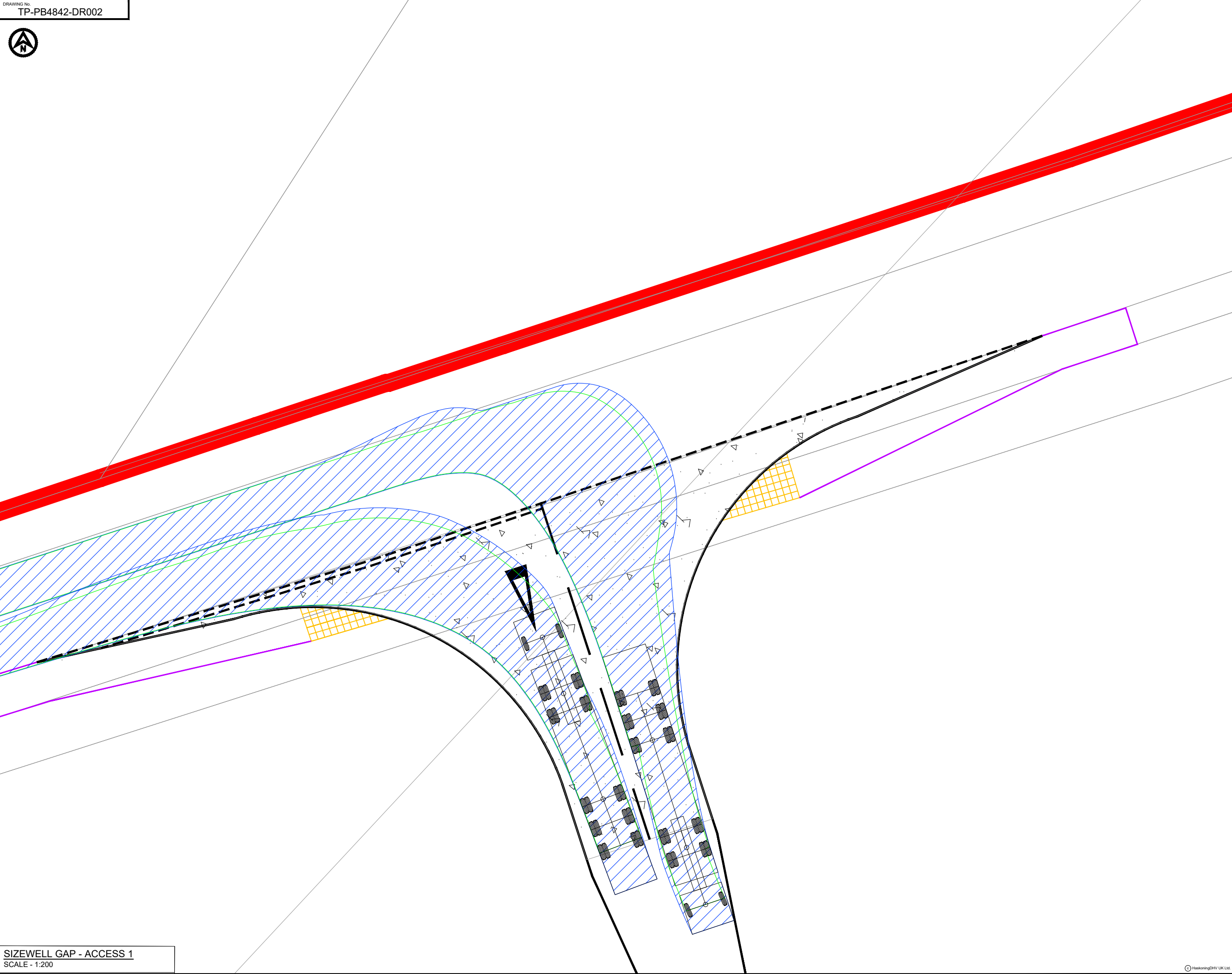
ACCESS 1
SIZEWELL GAP



| | | | | | |
|-------|----------|-------------|--------|--------------|-----|
| DRAWN | JL | CHECKED | ST | APPROVED | ADR |
| DATE | 09.10.18 | SCALE AT A3 | VARIES | AUTOCAD REF. | |

| | | | |
|------------|-----------------|----------|------|
| DRAWING No | TP-PB4842-DR001 | REVISION | D0.6 |
|------------|-----------------|----------|------|

CLIENT DWG No.



SIZEWELL GAP - ACCESS 1
SCALE - 1:200

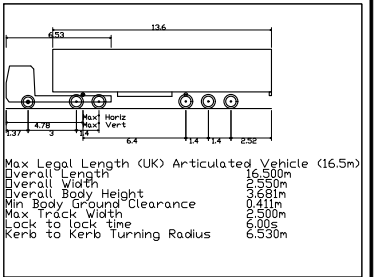
- NOTES**
1. Do not scale from this drawing, all dimensions are in metres unless noted otherwise.
 2. This drawing has been based upon Ordnance Survey Maps and Royal HaskoningDHV can not guarantee the accuracy of data.

- KEY**
- ORDER LIMITS
 - PROPOSED EXTENDED CYCLEWAY
 - PROPOSED ACCESS BOUNDARY/ROAD MARKINGS

FULL DEPTH CARRIAGEWAY CONSTRUCTION WITH BOUND SURFACE

TACTILE PAVING

VEHICLE TRACKING



- VEHICLE BODY SWEEP PATH (FORWARD GEAR)
- VEHICLE CHASSIS SWEEP PATH

| | | | | | |
|------|----------|---------------------------------------|----|-----|-----|
| D0.3 | 24.07.19 | DRAWING TITLE AMENDED | JL | SKT | SKT |
| D0.2 | 10.06.19 | ORDER LIMITS, ACCESS LOCATION UPDATED | JL | SKT | SKT |
| D.01 | | FIRST ISSUE | | | |
| REV | DATE | DESCRIPTION | BY | CHK | APP |

REVISIONS

CLIENT



PROJECT

EAST ANGLIA ONE North

TITLE

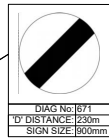
ACCESS 1
SIZEWELL GAP
MAX ARTICULATED HGV
SWEEP PATH ANALYSIS
(RIGHT TURN IN / LEFT TURN OUT)



| | | | | | |
|-------|----------|-------------|-------|--------------|-----|
| DRAWN | JL | CHECKED | SKT | APPROVED | ADR |
| DATE | 09.10.18 | SCALE AT A3 | 1:200 | AUTOCAD REF. | |

| | | | |
|----------------|-----------------|----------|------|
| DRAWING No. | TP-PB4842-DR002 | REVISION | D0.3 |
| CLIENT DWG No. | | | |

DRAWING No
TP-PB4842-DR003



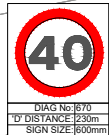
WORKS ACCESS

DIAG No 17301
D' DISTANCE 180m
X HEIGHT 100mm



WORKS ACCESS

DIAG No 17301
D' DISTANCE 180m
X HEIGHT 100mm



ACCESS 2



VISIBILITY DETAILS

SCALE - 1:2000



rm
tages

ACCESS DETAILS

SCALE - 1:500

NOTES

- Do not scale from this drawing. all dimensions are in metres unless noted otherwise.
- This drawing has been based upon Ordnance Survey Maps and Royal HaskoningDHV can not guarantee the accuracy of data.
- Road markings and signs
- All road markings and signage to conform with the 'Traffic Signs Regulation and General Directions 2016 and Chapter 8.
- 'D' distance is the siting distance of temporary road signs from the closest haul road crossing point/access location.
- Visibility
- X-distance - the set back from the nearest edge of the carriageway from which the access will be taken
- Y-Distance - the SSD measured along the nearest edge of the carriageway to its intersection with the centreline of the access.
- SSD - Stopping Sight Distance for design speed of the road.
- All vegetation to be cleared/trimmed within identified visibility envelope.

KEY

- ORDER LIMITS
- PROPOSED EXTENDED CYCLEWAY
- PROPOSED ACCESS BOUNDARY/ROAD MARKINGS
- VISIBILITY SPLAY (SEE VISIBILITY TABLE)
- PROPOSED TEMPORARY ROAD SIGN



| ACCESS 2 - SIZEWELL GAP | VISIBILITY | |
|---|------------|------|
| | EAST | WEST |
| Posted Speed Limit (PSL) (mph) | 60 | |
| Required Y-distance SSD for PSL (m) | 215 | |
| Existing achievable Y-distance SSD 1 (m) | 195 | 215 |
| Required Y-distance SSD achievable? | No | Yes |
| 85th percentile speed (mph) | 57.1 | |
| Required Y-distance SSD for 85th percentile speed (m) | 215 | |
| Existing Y-distance SSD suitable for 85th percentile speeds | No | Yes |
| Proposed Reduced Speed Limit (RSL) (mph) | 40 | |
| Assumed design speed (mph) | 40 | |
| Required Y-distance SSD for design speed (m) | 120 | |
| Required Y-distance SSD achievable? | Yes | Yes |
| Traffic control measures required | Yes | Yes |

* Distances measured on site.

| | | | | | |
|------|----------|---------------------------------|----|-----|-----|
| D0.4 | 24.07.19 | PAGE SIZE CHANGED FROM A3 TO A1 | JL | SKT | SKT |
| D0.3 | 10.06.19 | ORDER LIMITS UPDATED | JL | SKT | SKT |
| D0.2 | 16.11.18 | ORDER LIMITS UPDATED | JL | SKT | ADR |
| D.01 | | FIRST ISSUE | | | |

| REV | DATE | DESCRIPTION | BY | CHK | APP |
|-----|------|-------------|----|-----|-----|
|-----|------|-------------|----|-----|-----|

REVISIONS

CLIENT



PROJECT

EAST ANGLIA ONE North

TITLE

ACCESS 2
SIZEWELL GAP

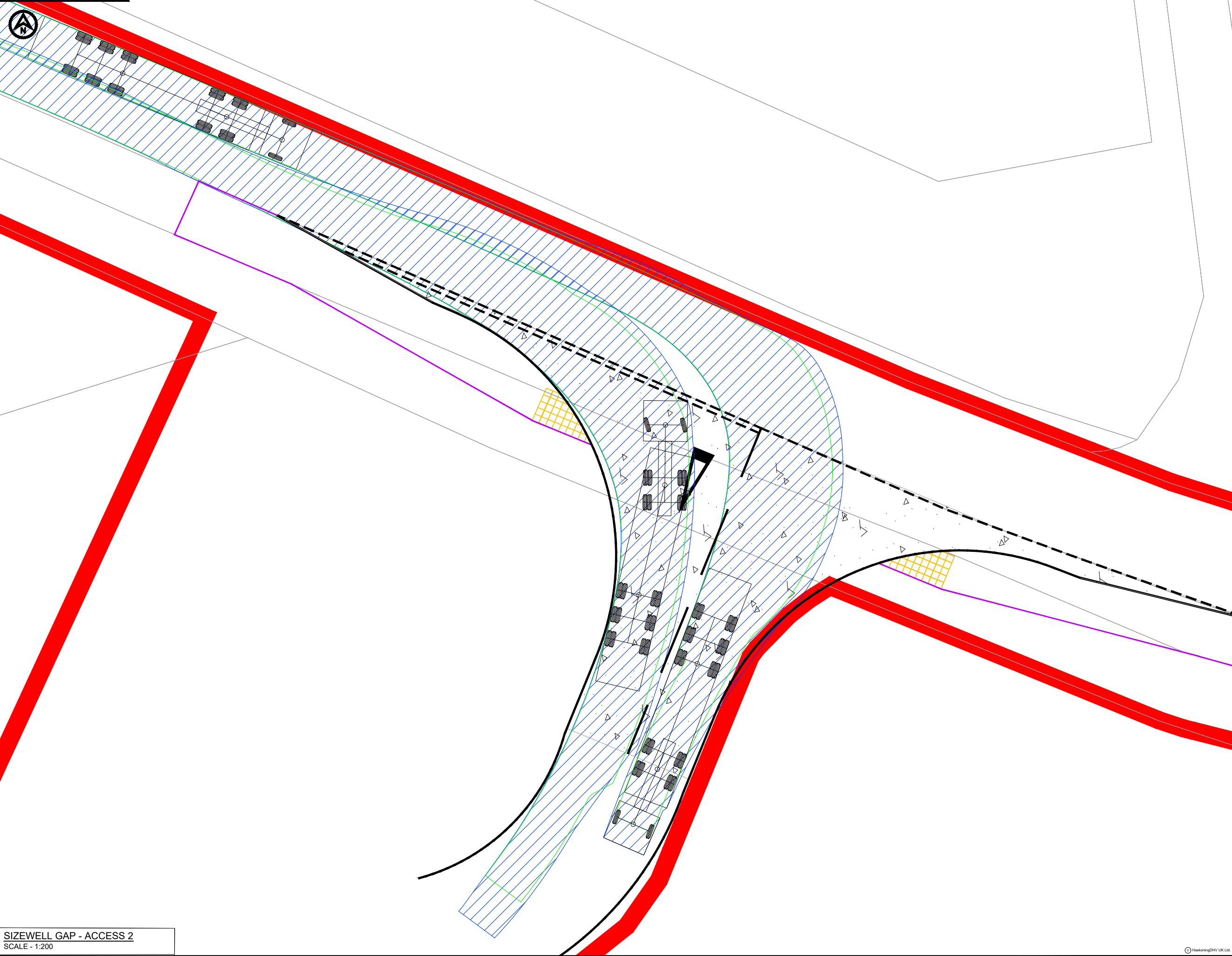


| | | | | | |
|-------|----|---------|----|----------|-----|
| DRAWN | JL | CHECKED | ST | APPROVED | ADR |
|-------|----|---------|----|----------|-----|

| | | | | | |
|------|----------|-------------|-----------|--------------|--|
| DATE | 09.10.18 | SCALE AT A3 | VARIABLES | AUTOCAD REF. | |
|------|----------|-------------|-----------|--------------|--|

| | | | |
|------------|-----------------|----------|--|
| DRAWING No | TP-PB4842-DR003 | REVISION | |
|------------|-----------------|----------|--|

| | | | |
|----------------|--|--|--|
| CLIENT DWG No. | | | |
|----------------|--|--|--|



SIZEWELL GAP - ACCESS 2
SCALE - 1:200

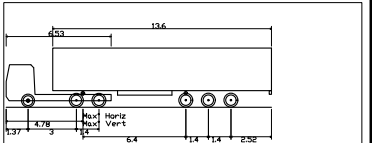
NOTES
1. Do not scale from this drawing, all dimensions are in metres unless noted otherwise.
2. This drawing has been based upon Ordnance Survey Maps and Royal HaskoningDHV can not guarantee the accuracy of data.

- KEY**
- ORDER LIMITS
 - PROPOSED EXTENDED CYCLEWAY
 - PROPOSED ACCESS BOUNDARY/ROAD MARKINGS

FULL DEPTH CARRIAGEWAY CONSTRUCTION WITH BOUND SURFACE

TACTILE PAVING

VEHICLE TRACKING



Max Legal Length (UK) Articulated Vehicle (16.5m)
Overall Length 16.500m
Overall Width 2.550m
Overall Body Height 3.281m
Min Body Ground Clearance 0.41m
Max Track Width 2.500m
Lock to lock time 6.00s
Kerb to Kerb Turning Radius 6.530m

VEHICLE BODY SWEEP PATH (FORWARD GEAR)
VEHICLE CHASSIS SWEEP PATH

| | | | | | |
|------|----------|-----------------------|----|-----|-----|
| D0.3 | 24.07.19 | DRAWING TITLE AMENDED | JL | SKT | SKT |
| D0.2 | 10.06.19 | ORDER LIMITS, UPDATED | JL | SKT | SKT |
| D.01 | | FIRST ISSUE | | | |
| REV | DATE | DESCRIPTION | BY | CHK | APP |

REVISIONS

CLIENT



PROJECT

EAST ANGLIA ONE North

TITLE

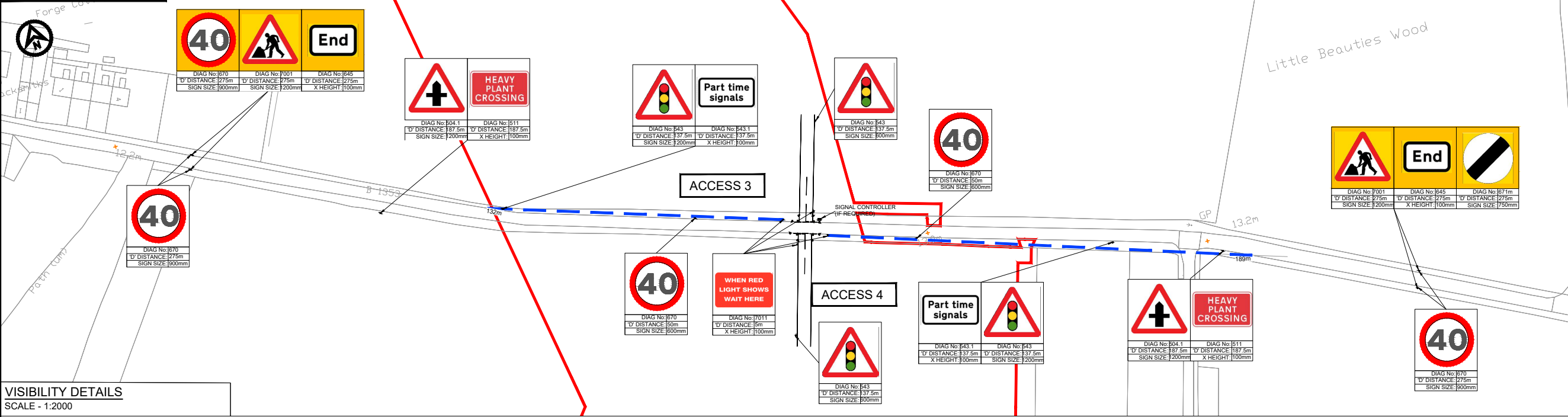
ACCESS 2
SIZEWELL GAP
MAX ARTICULATED HGV
SWEEP PATH ANALYSIS
(RIGHT TURN IN / LEFT TURN OUT)



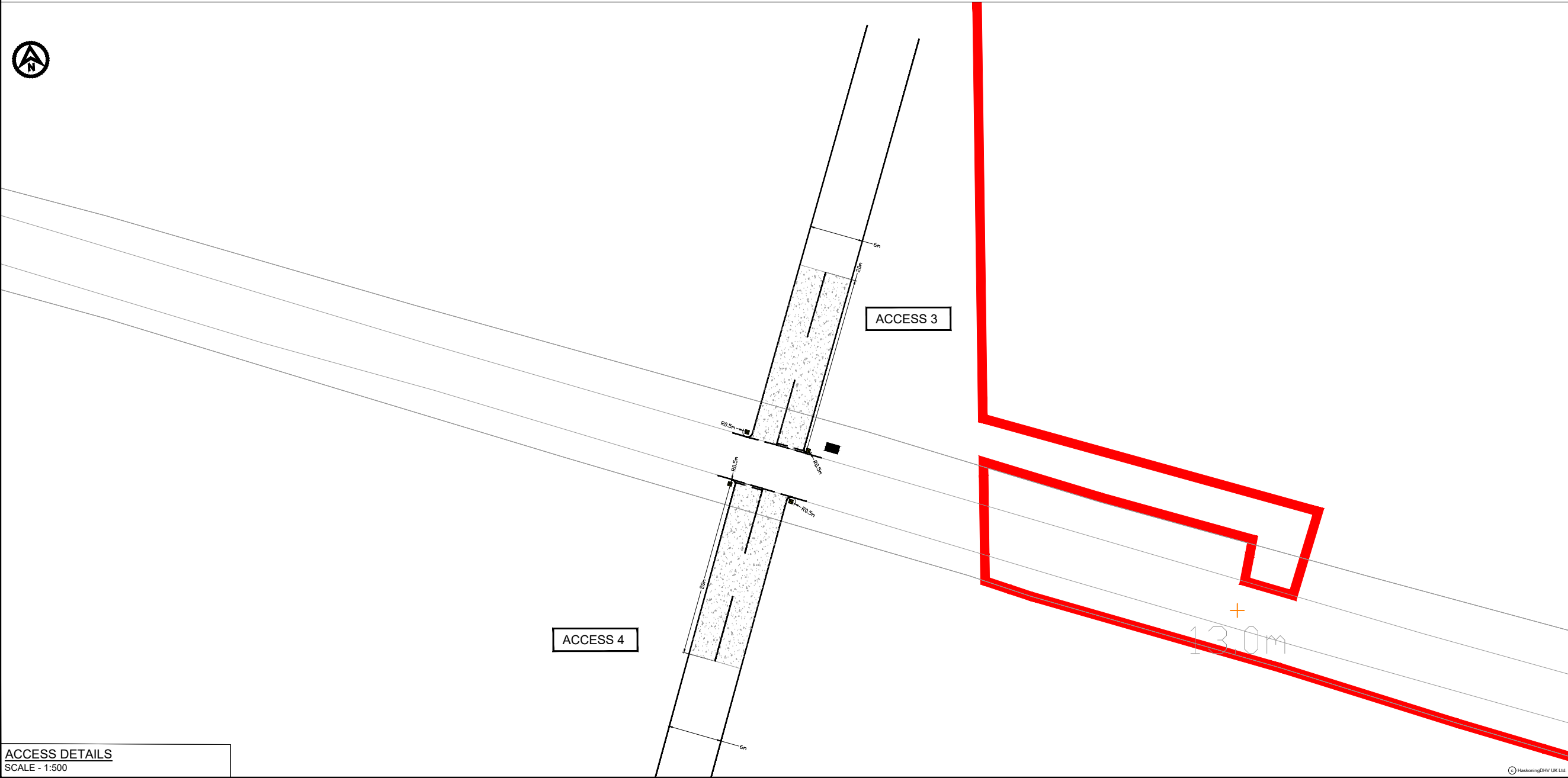
| | | | | | |
|-------|----------|-------------|-------|--------------|-----|
| DRAWN | JL | CHECKED | SKT | APPROVED | ADR |
| DATE | 09.10.18 | SCALE AT A3 | 1:200 | AUTOCAD REF. | |

| | | | |
|----------------|-----------------|----------|------|
| DRAWING No. | TP-PB4842-DR004 | REVISION | D0.3 |
| CLIENT DWG No. | | | |

DRAWING No.
TP-PB4842-DR007



VISIBILITY DETAILS
SCALE - 1:2000



ACCESS DETAILS
SCALE - 1:500

NOTES

- Do not scale from this drawing, all dimensions are in metres unless noted otherwise.
- This drawing has been based upon Ordnance Survey Maps and Royal HaskoningDHV can not guarantee the accuracy of data.

Road markings and signs

- All road markings and signage to conform with the 'Traffic Signs Regulation and General Directions 2016 and Chapter 8.
- 'D' distance is the sighting distance of temporary road signs from the closest haul road crossing point/access location.

Visibility

- SSD- Stopping Sight Distance to traffic signals for design speed of road.
- All vegetation to be cleared/trimmed within identified visibility envelope.

KEY

- ORDER LIMITS
- PROPOSED ACCESS BOUNDARY/ROAD MARKINGS
- SSD TO TRAFFIC LIGHTS (SEE VISIBILITY TABLE)
- PROPOSED TEMPORARY ROAD SIGN
- PROPOSED TRAFFIC SIGNAL
- PROPOSED YELLOW DEMARCATION BOLLARD

| ACCESS 3 - NORTH SIDE OF B1353 (EAST OF ALDRINHAM) | | VISIBILITY | |
|--|--|------------|------|
| | | EAST | WEST |
| Posted Speed Limit (PSL) (mph) | | 60 | |
| Required SSD for PSL (m) | | 215 | |
| Existing achievable SSD (m) | | N/A | 132 |
| Required SSD achievable? | | N/A | No |
| 85 th percentile speed (mph) | | 54.1 | |
| Required SSD for 85 th percentile speed (m) | | 215 | |
| Existing SSD suitable for 85 th percentile speeds | | N/A | No |
| Proposed Reduced Speed Limit (RSL) (mph) | | 40 | |
| Assumed design speed (mph) | | 40 | |
| Required SSD for design speed (m) | | 120 | |
| Required SSD achievable? | | N/A | Yes |
| Traffic control measures required | | Yes | |

Distances measured on site.

| ACCESS 4 - SOUTH SIDE OF B1353 (EAST OF ALDRINHAM) | | VISIBILITY | |
|--|--|------------|------|
| | | EAST | WEST |
| Posted Speed Limit (PSL) (mph) | | 60 | |
| Required SSD for PSL (m) | | 215 | |
| Existing achievable SSD (m) | | 189 | N/A |
| Required SSD achievable? | | No | N/A |
| 85 th percentile speed (mph) | | 54.1 | |
| Required SSD for 85 th percentile speed (m) | | 215 | |
| Existing SSD suitable for 85 th percentile speeds | | No | N/A |
| Proposed Reduced Speed Limit (RSL) (mph) | | 40 | |
| Assumed design speed (mph) | | 40 | |
| Required SSD for design speed (m) | | 120 | |
| Required SSD achievable? | | Yes | N/A |
| Traffic control measures required | | Yes | |

Distances measured on site.

| REV | DATE | DESCRIPTION | BY | CHK | APP |
|------|----------|---------------------------------------|----|-----|-----|
| D0.5 | 24.07.19 | PAGE SIZE CHANGED FROM A3 TO A1 | JL | SKT | SKT |
| D0.4 | 10.06.19 | ORDER LIMITS, ACCESS LOCATION UPDATED | JL | SKT | SKT |
| D.03 | 16.11.18 | ORDER LIMIT UPDATED | JL | SKT | ADR |
| D.02 | 14.11.18 | EXTENSION OF TEMPORARY SPEED LIMIT | JL | SKT | ADR |
| D.01 | | FIRST ISSUE | | | |

REVISIONS

CLIENT

PROJECT

TITLE

DRAWN JL **CHECKED** ST **APPROVED** ADR

DATE 09.10.18 **SCALE AT A3** VARIES **AUTOCAD REF.**

DRAWING No. TP-PB4842-DR007 **REVISION** D0.5

CLIENT DWG No.

SCOTTISHPOWER RENEWABLES

EAST ANGLIA ONE North

ACCESS 3 & 4 B1353

Royal HaskoningDHV
Enhancing Society Together

Enterprise House,
Delta Way, Egham,
Surrey, TW20 8PX
Tel: +44(0)1832 569596
www.royalhaskoningdhv.com

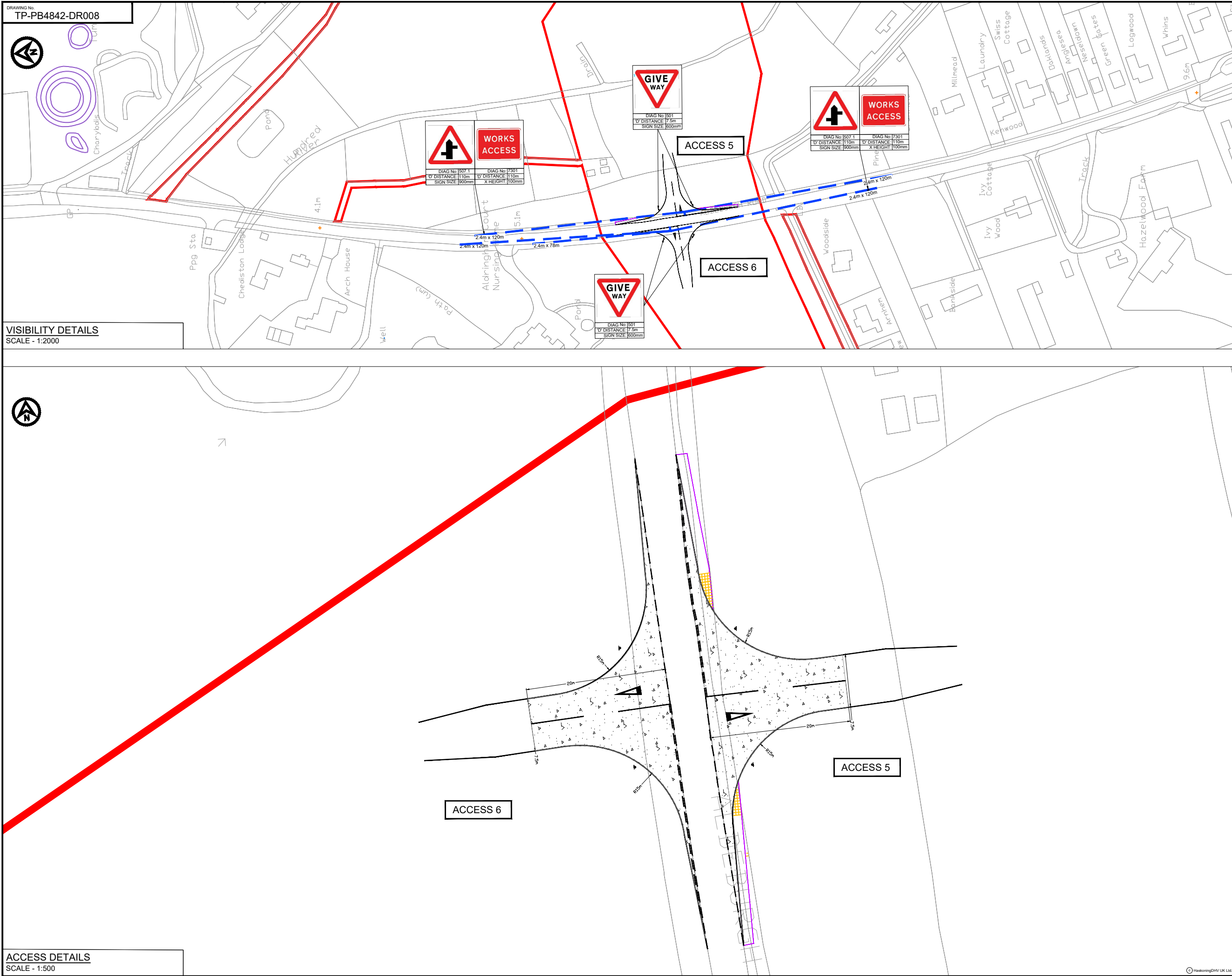
DRAWING No.
TP-PB4842-DR008



VISIBILITY DETAILS
SCALE - 1:2000



ACCESS DETAILS
SCALE - 1:500



- NOTES**
1. Do not scale from this drawing, all dimensions are in metres unless noted otherwise.
 2. This drawing has been based upon Ordnance Survey Maps and Royal HaskoningDHV can not guarantee the accuracy of data.
- Road markings and signs**
3. All road markings and signage to conform with the 'Traffic Signs Regulation and General Directions 2016 and Chapter 8.
 4. 'D' distance is the sighting distance of temporary road signs from the closest haul road crossing point/access location.
- Visibility**
5. X-distance - the set back from the nearest edge of the carriageway from which the access will be taken
 6. Y-Distance - the SSD measured along the nearest edge of the carriageway to its intersection with the centreline of the access.
 7. SSD- Stopping Sight Distance for design speed of the road.
 8. All vegetation to be cleared/trimmed within identified visibility envelope.

KEY

| | |
|--|---|
| | ORDER LIMITS |
| | PROPOSED EXTENDED CYCLEWAY |
| | PROPOSED ACCESS BOUNDARY/ROAD MARKINGS |
| | VISIBILITY SPLAY (SEE VISIBILITY TABLE) |
| | PROPOSED TEMPORARY ROAD SIGN |

| | |
|--|--|
| | FULL DEPTH CARRIAGEWAY CONSTRUCTION WITH BOUND SURFACE |
| | TACTILE PAVING |

| ACCESS 5 - EAST SIDE OF B1122 (SOUTH OF ALDRINGHAM) | | VISIBILITY | |
|---|--|------------|-------|
| | | NORTH | SOUTH |
| Posted Speed Limit (PSL) (mph) | | 40 | |
| Required Y-distance SSD for PSL (m) | | 120 | |
| Existing achievable Y-distance SSD (m) | | 120 | 120 |
| Required Y-distance SSD achievable? | | Yes | Yes |
| 85 th percentile speed (mph) | | 44.7 | |
| Required Y-distance SSD for 85 th percentile speed (m) | | 120 | |
| Existing Y-distance SSD suitable for 85 th percentile speeds | | Yes | Yes |

| ACCESS 6 - WEST SIDE OF B1122 (SOUTH OF ALDRINGHAM) | | VISIBILITY | |
|---|--|------------|-------|
| | | NORTH | SOUTH |
| Posted Speed Limit (PSL) (mph) | | 40 | |
| Required Y-distance SSD for PSL (m) | | 120 | |
| Existing achievable Y-distance SSD (m) | | 120 | 120 |
| Required Y-distance SSD achievable? | | Yes | Yes |
| 85 th percentile speed (mph) | | 44.7 | |
| Required Y-distance SSD for 85 th percentile speed (m) | | 120 | |
| Existing Y-distance SSD suitable for 85 th percentile speeds | | Yes | Yes |

| | | | | | |
|------|----------|---------------------------------------|----|-----|-----|
| D0.3 | 24.07.19 | PAGE SIZE CHANGED FROM A3 TO A1 | JL | SKT | SKT |
| D0.4 | 11.06.19 | ORDER LIMITS, ACCESS LOCATION UPDATED | JL | SKT | SKT |
| D0.3 | 11.04.19 | HIGHWAY BOUNDARY ADDED | JL | SKT | SKT |
| D0.2 | 16.11.18 | ORDER LIMITS UPDATED | JL | SKT | ADR |
| D.01 | | FIRST ISSUE | | | |

| REV | DATE | DESCRIPTION | BY | CHK | APP |
|-----|------|-------------|----|-----|-----|
|-----|------|-------------|----|-----|-----|

REVISIONS

CLIENT



PROJECT

EAST ANGLIA ONE North

TITLE

ACCESS 5 & 6
B1122 ALDEBURGH ROAD



DRAWN JL CHECKED ST APPROVED ADR

DATE 09.10.18 SCALE AT A3 VARIES AUTOCAD REF.

DRAWING No. TP-PB4842-DR008

CLIENT DWG No.

REVISION D0.5



ACCESS 5

B122 ALDEBURGH ROAD - ACCESS 5
SCALE - 1:200

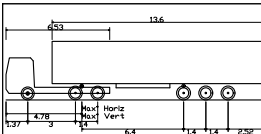
- NOTES**
1. Do not scale from this drawing, all dimensions are in metres unless noted otherwise.
 2. This drawing has been based upon Ordnance Survey Maps and Royal HaskoningDHV can not guarantee the accuracy of data.

- KEY**
- ORDER LIMITS
 - PROPOSED EXTENDED CYCLEWAY
 - PROPOSED ACCESS BOUNDARY/ROAD MARKINGS

FULL DEPTH CARRIAGEWAY CONSTRUCTION WITH BOUND SURFACE

TACTILE PAVING

VEHICLE TRACKING



Max Legal Length (UK) Articulated Vehicle (16.5m)
Overall Length 16.50m
Overall Width 2.55m
Overall Body Height 3.65m
Min Bdy Ground Clearance 0.41m
Max Track Width 2.55m
Lock to lock time 6.00s
Kerb to Kerb Turning Radius 6.530m

- VEHICLE BODY SWEEP PATH (FORWARD GEAR)
- VEHICLE CHASSIS SWEEP PATH

| | | | | | |
|------|----------|---------------------------------------|----|-----|-----|
| D0.3 | 24.07.19 | DRAWING TITLE AMENDED | JL | SKT | SKT |
| D0.2 | 11.06.19 | ORDER LIMITS, ACCESS LOCATION UPDATED | JL | SKT | SKT |
| D.01 | | FIRST ISSUE | | | |
| REV | DATE | DESCRIPTION | BY | CHK | APP |

REVISIONS

CLIENT



PROJECT

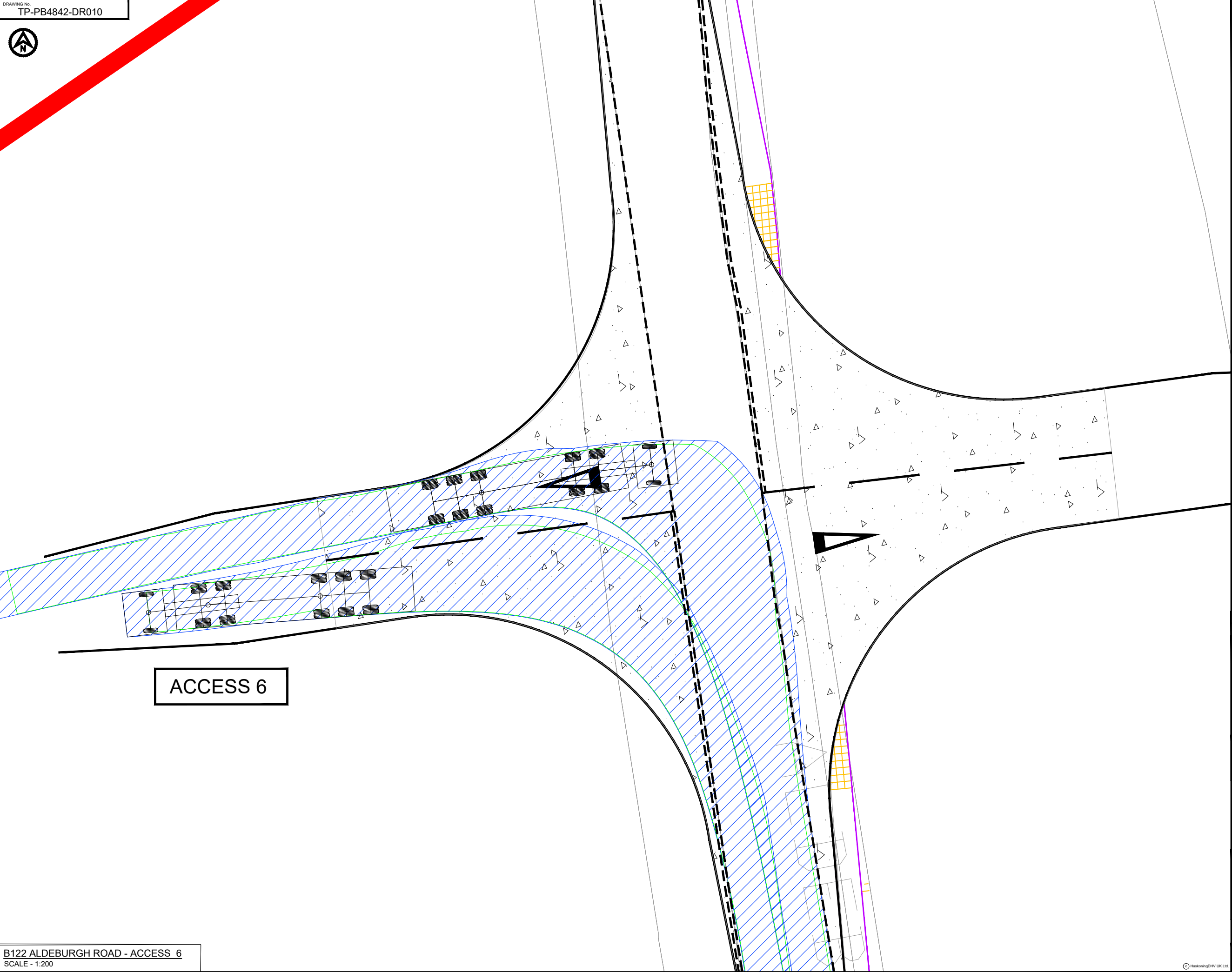
EAST ANGLIA ONE North

TITLE

ACCESS 5
B1122 ALDEBURGH ROAD
MAX ARTICULATED HGV
SWEEP PATH ANALYSIS



| | | | | | |
|-------------|-----------------|----------------|-------|--------------|------|
| DRAWN | JL | CHECKED | SKT | APPROVED | ADR |
| DATE | 09.10.18 | SCALE AT A3 | 1:200 | AUTOCAD REF. | |
| DRAWING No. | TP-PB4842-DR009 | CLIENT DWG No. | | REVISION | D0.3 |



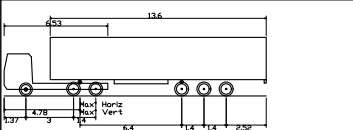
NOTES
1. Do not scale from this drawing, all dimensions are in metres unless noted otherwise.
2. This drawing has been based upon Ordnance Survey Maps and Royal HaskoningDHV can not guarantee the accuracy of data.

KEY
— ORDER LIMITS
— PROPOSED EXTENDED CYCLEWAY
— PROPOSED ACCESS BOUNDARY/ROAD MARKINGS

— FULL DEPTH CARRIAGEWAY CONSTRUCTION WITH BOUND SURFACE

— TACTILE PAVING

VEHICLE TRACKING



Max Legal Length (UK) Articulated Vehicle (16.5m)
Overall Length 16.50m
Overall Width 2.55m
Overall Body Height 3.65m
Min Body Ground Clearance 0.41m
Max Track Width 2.55m
Lock to lock time 6.00s
Kerb to Kerb Turning Radius 6.530m

— VEHICLE BODY SWEEP PATH (FORWARD GEAR)
— VEHICLE CHASSIS SWEEP PATH

| | | | | | |
|------|----------|---------------------------------------|----|-----|-----|
| D0.3 | 24.07.19 | DRAWING TITLE AMENDED | JL | SKT | SKT |
| D0.2 | 11.06.19 | ORDER LIMITS, ACCESS LOCATION UPDATED | JL | SKT | SKT |
| D.01 | | FIRST ISSUE | | | |
| REV | DATE | DESCRIPTION | BY | CHK | APP |

REVISIONS

CLIENT



PROJECT

EAST ANGLIA ONE North

TITLE

ACCESS 6
B122 ALDEBURGH ROAD
MAX ARTICULATED HGV
SWEEP PATH ANALYSIS



| | | | | | |
|-------|----------|-------------|-------|--------------|-----|
| DRAWN | JL | CHECKED | SKT | APPROVED | ADR |
| DATE | 09.10.18 | SCALE AT A3 | 1:200 | AUTOCAD REF. | |

| | | | |
|----------------|-----------------|----------|------|
| DRAWING No. | TP-PB4842-DR010 | REVISION | D0.3 |
| CLIENT DWG No. | | | |

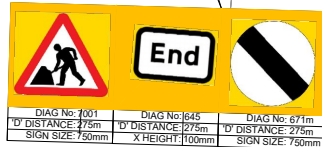
DRAWING No.
TP-PB4842-DR027



Covert



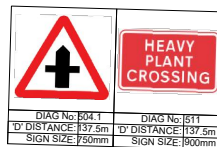
DIAG No: 1670
1' DISTANCE: 275m
SIGN SIZE: 900mm



DIAG No: 1001
1' DISTANCE: 275m
SIGN SIZE: 750mm

DIAG No: 1645
1' DISTANCE: 275m
X HEIGHT: 100mm

DIAG No: 671m
1' DISTANCE: 275m
SIGN SIZE: 750mm



DIAG No: 1041
1' DISTANCE: 137.5m
SIGN SIZE: 750mm

DIAG No: 1511
1' DISTANCE: 137.5m
SIGN SIZE: 900mm



DIAG No: 1670
1' DISTANCE: 50m
SIGN SIZE: 900mm

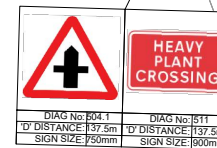


DIAG No: 1501
1' DISTANCE: 117m
SIGN SIZE: 900mm

ACCESS 8



DIAG No: 1670
1' DISTANCE: 50m
SIGN SIZE: 900mm



DIAG No: 1041
1' DISTANCE: 137.5m
SIGN SIZE: 750mm

DIAG No: 1511
1' DISTANCE: 137.5m
SIGN SIZE: 900mm

EXISTING SPEED LIMIT SIGNS TO BE
REMOVED FOR THE DURATION OF
THE CONSTRUCTION PERIOD

VISIBILITY DETAILS
SCALE - 1:2000



ACCESS 7

ACCESS 8

ACCESS DETAILS
SCALE - 1:500

NOTES

- Do not scale from this drawing, all dimensions are in metres unless noted otherwise.
 - This drawing has been based upon Ordnance Survey Maps and Royal HaskoningDHV can not guarantee the accuracy of data.
- Visibility
- X-distance - the set back from the nearest edge of the carriageway from which the access will be taken
 - Y-distance - the SSD measured along the nearest edge of the carriageway to its intersection with the centreline of the access.
 - SSD - Stopping Sight Distance for design speed of the road.
 - All vegetation to be cleared/trimmed within identified visibility envelope.

KEY

- FULL DEPTH CARRIAGEWAY CONSTRUCTION WITH BOUND SURFACE
- HEDGEROW REMOVAL REQUIRED TO ACCOMMODATE VISIBILITY

- ORDER LIMITS
- PROPOSED ACCESS BOUNDARY/ROAD MARKINGS
- VISIBILITY SPLAY (SEE VISIBILITY TABLE)
- PROPOSED TEMPORARY ROAD SIGN

| ACCESS 7 - EAST SIDE OF SLOE LANE (NORTH OF KNORDISHALL COMMON) | | VISIBILITY | |
|---|--|------------|------|
| | | EAST | WEST |
| Posted Speed Limit (PSL) (mph) | | 30 | 215 |
| Required Y-distance SSD for PSL (m) | | 12 | 101 |
| Existing achievable Y-distance SSD (m) | | No | No |
| Required Y-distance SSD achievable? | | No | No |
| Proposed Reduced Speed Limit (RSL) (mph) | | 30 | |
| Assumed design speed (mph) | | 59(MPH) | |
| Required Y-distance SSD for design speed (m) | | Yes | Yes |
| Required Y-distance SSD achievable? | | Yes | Yes |
| Traffic control measures required | | Yes | Yes |

| ACCESS 8 - WEST SIDE OF SLOE LANE (NORTH OF KNORDISHALL COMMON) | | VISIBILITY | |
|---|--|------------|------|
| | | EAST | WEST |
| Posted Speed Limit (PSL) (mph) | | 30 | 215 |
| Required Y-distance SSD for PSL (m) | | 91 | 19 |
| Existing achievable Y-distance SSD (m) | | No | No |
| Required Y-distance SSD achievable? | | No | No |
| Proposed Reduced Speed Limit (RSL) (mph) | | 30 | |
| Assumed design speed (mph) | | 59 | |
| Required Y-distance SSD for design speed (m) | | Yes | Yes |
| Required Y-distance SSD achievable? | | Yes | Yes |
| Traffic control measures required | | Yes | Yes |

| | | | | | |
|------|----------|--|----|-----|-----|
| DO 2 | 24.07.19 | HEDGEROW REMOVAL AND PAGE SIZE AMENDED | JL | SKT | SKT |
| D.01 | | FIRST ISSUE | | | |
| REV | DATE | DESCRIPTION | BY | CHK | APP |

REVISIONS

CLIENT



PROJECT

EAST ANGLIA ONE North

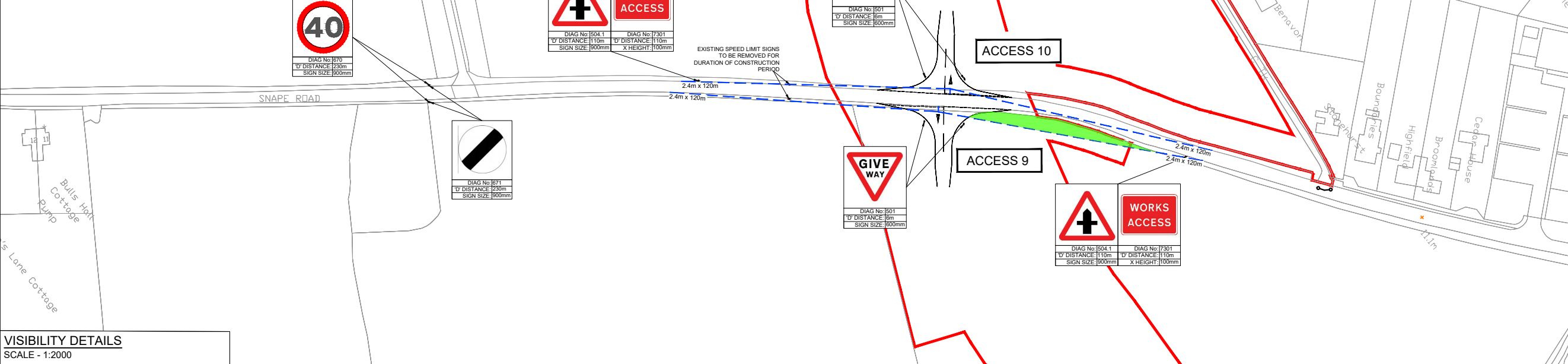
TITLE

ACCESS 7 & 8
GROVE ROAD

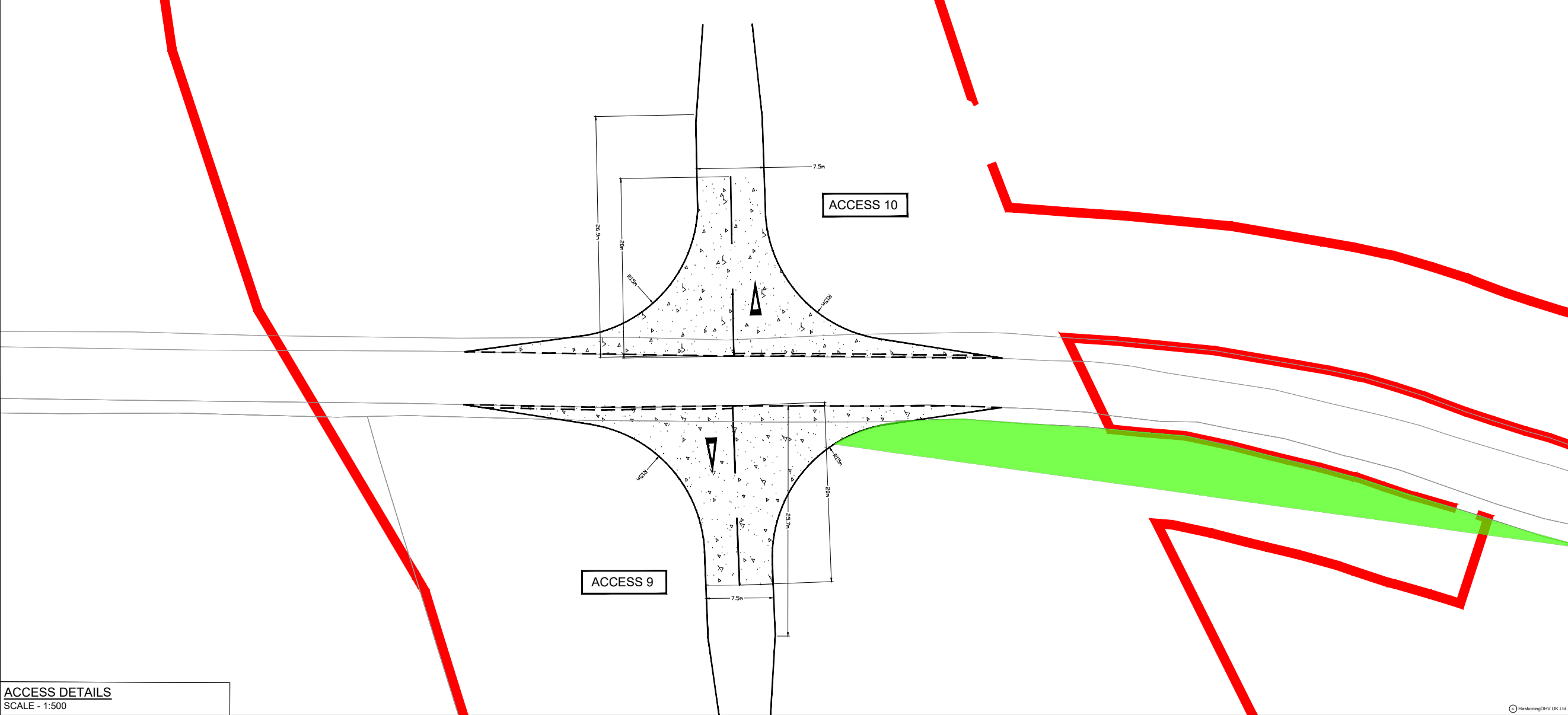


| | | | | | |
|-----------------------------|----------|-------------|-----------|--------------|----------|
| DRAWN | JL | CHECKED | ST | APPROVED | ADR |
| DATE | 12.06.19 | SCALE AT A3 | VARIABLES | AUTOCAD REF. | |
| DRAWING No. TP-PB4842-DR027 | | | | | REVISION |
| CLIENT DWG No. | | | | | D0.2 |

DRAWING No.
TP-PB4842-DR011



VISIBILITY DETAILS
SCALE - 1:2000



ACCESS DETAILS
SCALE - 1:500

- NOTES**
- Do not scale from this drawing, all dimensions are in metres unless noted otherwise.
 - This drawing has been based upon Ordnance Survey Maps and Royal HaskoningDHV can not guarantee the accuracy of data.
- Road markings and signs**
- All road markings and signage to conform with the 'Traffic Signs Regulation and General Directions 2016 and Chapter 8.
 - 'D' distance is the stopping distance of temporary road signs from the closest haul road crossing point/access location.
- Visibility**
- X-distance - the set back from the nearest edge of the carriageway from which the access will be taken
 - Y-Distance - the SSD measured along the nearest edge of the carriageway to its intersection with the centreline of the access.
 - SSD - Stopping Sight distance for design speed of the road.
 - All vegetation to be cleared/trimmed within identified visibility envelope.

- KEY**
- FULL DEPTH CARRIAGEWAY CONSTRUCTION WITH BOUND SURFACE
 - HEDGEROW REMOVAL REQUIRED TO ACCOMMODATE VISIBILITY
 - ORDER LIMITS
 - PROPOSED ACCESS BOUNDARY/ROAD MARKINGS
 - VISIBILITY SPLAY (SEE VISIBILITY TABLE)
 - PROPOSED TEMPORARY ROAD SIGN

| ACCESS 9 - EAST SIDE OF B1069 (SOUTH OF COLDFAIR GREEN) | | VISIBILITY NORTH SOUTH | |
|---|------|------------------------|--|
| Posted Speed Limit (PSL) (mph) | 40 | | |
| Required Y-distance SSD for PSL (m) | 120 | | |
| Existing achievable Y-distance SSD (m) | 50 | 95 | |
| Required Y-distance SSD achievable? | No | No | |
| 85 th percentile speed (mph) | 39.4 | | |
| Required Y-distance SSD for 85 th percentile speed (m) | 120 | | |
| Existing Y-distance SSD suitable for 85 th percentile speeds | No | No | |
| Proposed Reduced Speed Limit (RSL) (mph) | 40 | | |
| Assumed design speed (mph) | 40 | | |
| Required Y-distance SSD for design speed (m) | 120 | | |
| Required Y-distance SSD achievable? | Yes | Yes | |
| Traffic control measures required | Yes | Yes | |

| ACCESS 10 - WEST SIDE OF B1069 (SOUTH OF COLDFAIR GREEN) | | VISIBILITY NORTH SOUTH | |
|---|------|------------------------|--|
| Posted Speed Limit (PSL) (mph) | 40 | | |
| Required Y-distance SSD for PSL (m) | 120 | | |
| Existing achievable Y-distance SSD (m) | 145 | 268 | |
| Required Y-distance SSD achievable? | Yes | Yes | |
| 85 th percentile speed (mph) | 39.4 | | |
| Required Y-distance SSD for 85 th percentile speed (m) | 120 | | |
| Existing Y-distance SSD suitable for 85 th percentile speeds | Yes | Yes | |
| Proposed Reduced Speed Limit (RSL) (mph) | 40 | | |
| Assumed design speed (mph) | 40 | | |
| Required Y-distance SSD for design speed (m) | 120 | | |
| Required Y-distance SSD achievable? | Yes | Yes | |
| Traffic control measures required | Yes | Yes | |

| | | | | | |
|------|----------|---------------------------------------|----|-----|-----|
| D0.4 | 24.07.19 | PAGE SIZE CHANGED FROM A3 TO A1 | JL | SKT | SKT |
| D0.3 | 27.06.19 | ORDER LIMITS, ACCESS LOCATION UPDATED | JL | SKT | SKT |
| D0.2 | 16.11.18 | ORDER LIMITS UPDATED | JL | SKT | ADR |
| D.01 | | FIRST ISSUE | | | |
| REV | DATE | DESCRIPTION | BY | CHK | APP |

REVISIONS

CLIENT



PROJECT

EAST ANGLIA ONE North

TITLE

ACCESS 9 & 10
SNAPE ROAD

DRAWN JL

CHECKED ST

APPROVED ADR

DATE 09.10.18

SCALE AT A3 VARIES

AUTOCAD REF.

DRAWING No. TP-PB4842-DR011

REVISION

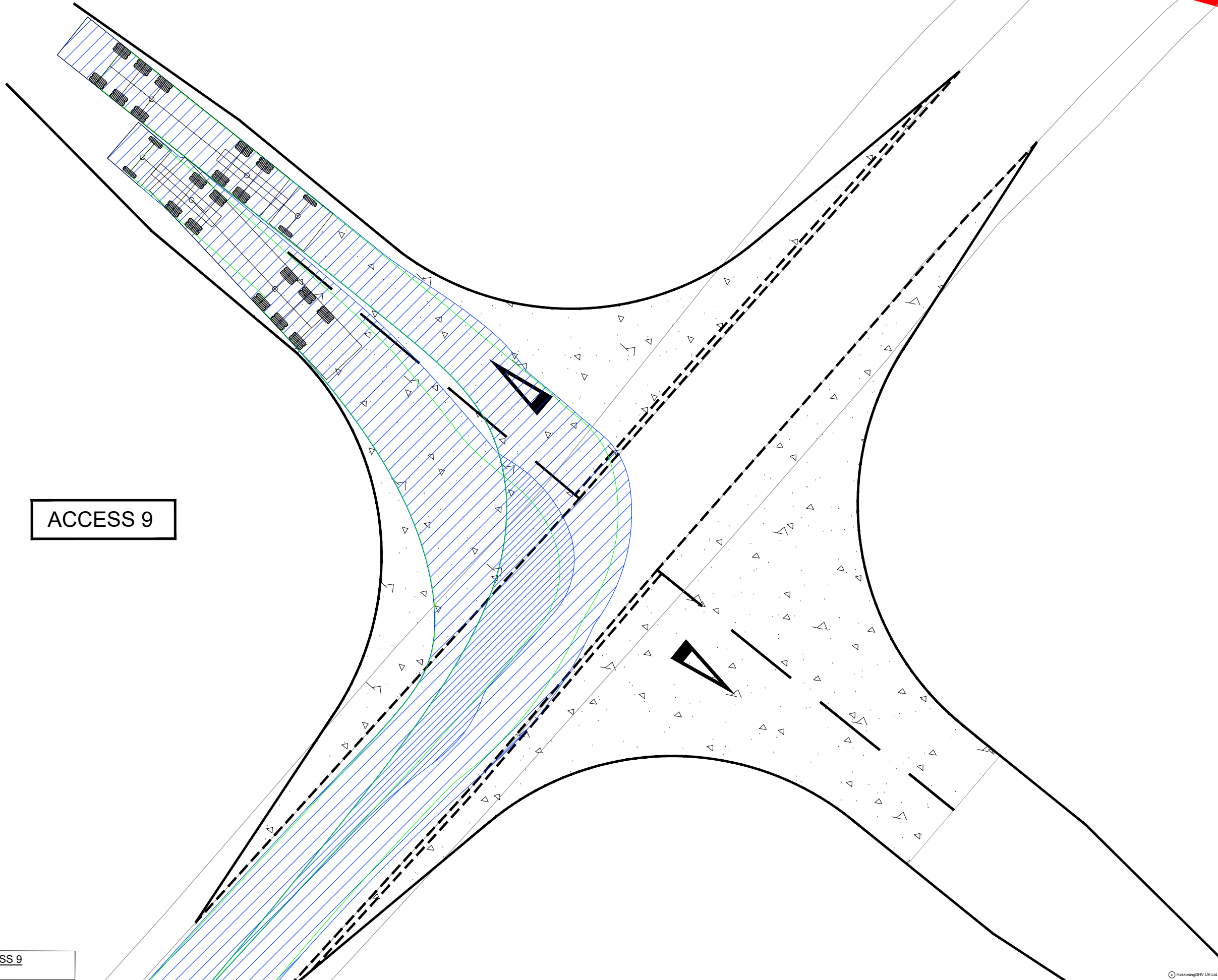
CLIENT DWG No.

D0.4

Enterprise House,
Delta Way, Egham,
Surrey, TW20 8RX
Tel +44(0)1832 589595
www.royalhaskoningdhv.com

Royal HaskoningDHV
Enhancing Society Together

© HaskoningDHV UK Ltd.



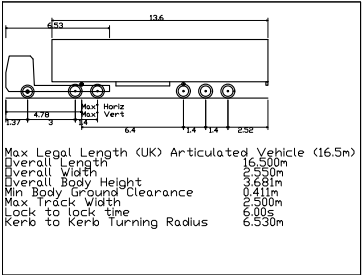
SNAPE ROAD - ACCESS 9
SCALE - 1:200

- NOTES**
1. Do not scale from this drawing, all dimensions are in metres unless noted otherwise.
 2. This drawing has been based upon Ordnance Survey Maps and Royal HaskoningDHV can not guarantee the accuracy of data.

- KEY**
- ORDER LIMITS
 - PROPOSED ACCESS BOUNDARY/ROAD MARKINGS

FULL DEPTH CARRIAGEWAY CONSTRUCTION WITH BOUND SURFACE

VEHICLE TRACKING



- VEHICLE BODY SWEEP PATH (FORWARD GEAR)
- VEHICLE CHASSIS SWEEP PATH

| | | | | | |
|------|----------|---------------------------------------|----|-----|-----|
| D0.3 | 24.07.19 | DRAWING TITLE AMENDED | JL | SKT | SKT |
| D0.2 | 27.06.19 | ORDER LIMITS, ACCESS LOCATION UPDATED | JL | SKT | SKT |
| D.01 | | FIRST ISSUE | | | |
| REV | DATE | DESCRIPTION | BY | CHK | APP |

REVISIONS

CLIENT



PROJECT

EAST ANGLIA ONE North

TITLE

ACCESS 9
SNAPE ROAD
MAX ARTICULATED HGV
SWEEP PATH ANALYSIS
(RIGHT TURN IN / LEFT TURN OUT)



| | | | | | |
|----------------|-----------------|-------------|-------|--------------|------|
| DRAWN | JL | CHECKED | SKT | APPROVED | ADR |
| DATE | 09.10.18 | SCALE AT A3 | 1:200 | AUTOCAD REF. | |
| DRAWING No. | TP-PB4842-DR012 | REVISION | | | |
| CLIENT DWG No. | | | | | D0.3 |



ACCESS 10

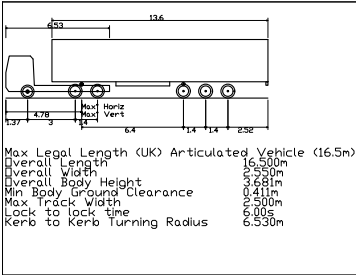
SNAPE ROAD - ACCESS 10
SCALE - 1:200

- NOTES**
1. Do not scale from this drawing, all dimensions are in metres unless noted otherwise.
 2. This drawing has been based upon Ordnance Survey Maps and Royal HaskoningDHV can not guarantee the accuracy of data.

- KEY**
- ORDER LIMITS
 - PROPOSED ACCESS BOUNDARY/ROAD MARKINGS



VEHICLE TRACKING



- VEHICLE BODY SWEEP PATH (FORWARD GEAR)
- VEHICLE CHASSIS SWEEP PATH

| | | | | | |
|------|----------|---------------------------------------|----|-----|-----|
| D0.3 | 24.07.19 | DRAWING TITLE AMENDED | JL | SKT | SKT |
| D0.2 | 27.06.19 | ORDER LIMITS, ACCESS LOCATION UPDATED | JL | SKT | SKT |
| D.01 | | FIRST ISSUE | | | |
| REV | DATE | DESCRIPTION | BY | CHK | APP |

REVISIONS

CLIENT



PROJECT

EAST ANGLIA ONE North

TITLE

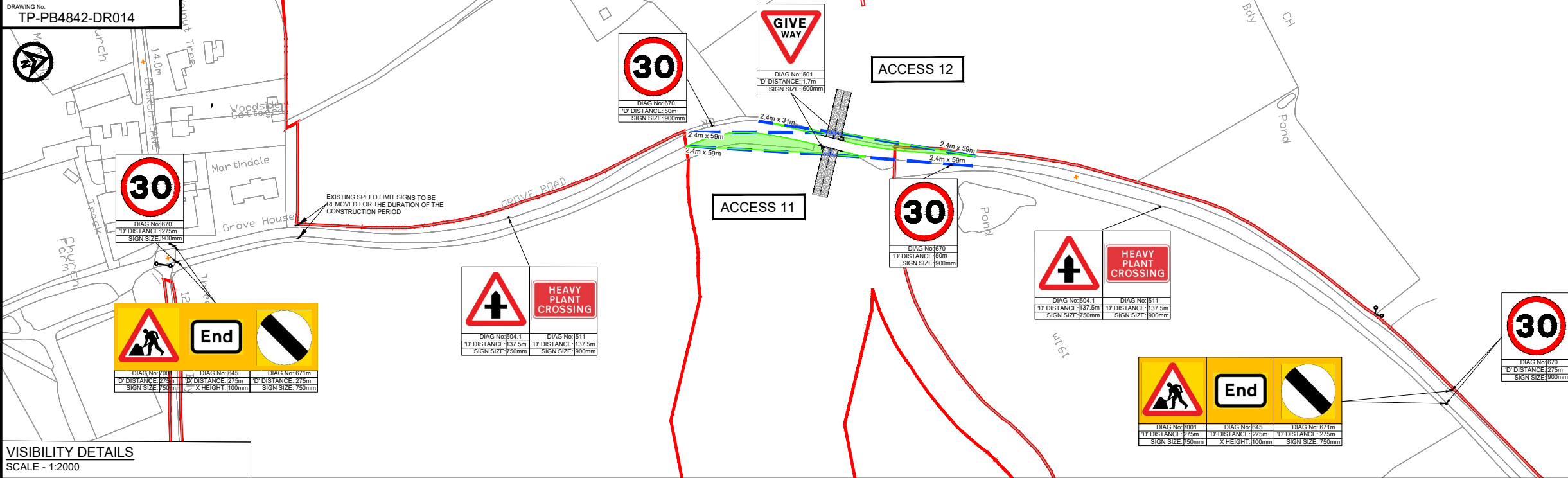
ACCESS 10
SNAPE ROAD
MAX ARTICULATED HGV
SWEEP PATH ANALYSIS
(LEFT TURN OUT)



| | | | | | |
|-------|----------|-------------|-------|--------------|-----|
| DRAWN | JL | CHECKED | SKT | APPROVED | ADR |
| DATE | 09.10.18 | SCALE AT A3 | 1:200 | AUTOCAD REF. | |

| | | | |
|----------------|-----------------|----------|------|
| DRAWING No. | TP-PB4842-DR013 | REVISION | D0.3 |
| CLIENT DWG No. | | | |

DRAWING No.
TP-PB4842-DR014



VISIBILITY DETAILS
SCALE - 1:2000



ACCESS DETAILS
SCALE - 1:500

- NOTES
- Do not scale from this drawing, all dimensions are in metres unless noted otherwise.
 - This drawing has been based upon Ordnance Survey Maps and Royal HaskoningDHV can not guarantee the accuracy of data.
- Visibility
- X-distance - the set back from the nearest edge of the carriageway from which the access will be taken
 - Y-Distance - the SSD measured along the nearest edge of the carriageway to its intersection with the centreline of the access.
 - SSD - Stopping Sight Distance for design speed of the road.
 - All vegetation to be cleared/trimmed within identified visibility envelope.

- KEY
- FULL DEPTH CARRIAGEWAY CONSTRUCTION WITH BOUND SURFACE
 - HEDGECROW REMOVAL REQUIRED TO ACCOMMODATE VISIBILITY
 - ORDER LIMITS
 - PROPOSED ACCESS BOUNDARY/ROAD MARKINGS
 - VISIBILITY SPAY (SEE VISIBILITY TABLE)
 - PROPOSED SPEED VISIBILITY SPAY
 - PROPOSED TEMPORARY ROAD SIGN

| ACCESS 11 - EAST SIDE OF GROVE ROAD (NORTH OF FRISTON) | | VISIBILITY | |
|---|--|------------|------|
| | | EAST | WEST |
| Posted Speed Limit (PSL) (mph) | | 60 | 215 |
| Required Y-distance SSD for PSL (m) | | 35 | 45 |
| Existing achievable Y-distance SSD (m) | | No | No |
| Required Y-distance SSD achievable? | | No | No |
| 85 th percentile speed (mph) | | 31.9 | |
| Required Y-distance SSD for 85 th percentile speed (m) | | 59 (M5) | |
| Proposed Reduced Speed Limit (RSL) (mph) | | 30 | |
| Required Y-distance SSD for design speed (m) | | 59 | |
| Required Y-distance SSD achievable? | | Yes | Yes |
| Traffic control measures required | | Yes | Yes |

| ACCESS 12 - WEST SIDE OF GROVE ROAD (NORTH OF FRISTON) | | VISIBILITY | |
|---|--|------------|------|
| | | EAST | WEST |
| Posted Speed Limit (PSL) (mph) | | 60 | 215 |
| Required Y-distance SSD for PSL (m) | | 35 | 45 |
| Existing achievable Y-distance SSD (m) | | 0 | 0 |
| Required Y-distance SSD achievable? | | No | No |
| 85 th percentile speed (mph) | | 31.9 | |
| Required Y-distance SSD for 85 th percentile speed (m) | | 59 (M5) | |
| Proposed Reduced Speed Limit (RSL) (mph) | | 30 | |
| Required Y-distance SSD for design speed (m) | | 59 | |
| Required Y-distance SSD achievable? | | Yes | Yes |
| Traffic control measures required | | Yes | Yes |

Distances measured on site.

| | | | | | |
|------|----------|---------------------------------|----|-----|-----|
| D0.4 | 24.07.18 | PAGE SIZE CHANGED FROM A3 TO A1 | JL | SKT | SKT |
| D0.3 | 12.06.18 | ORDER LIMITS UPDATED | JL | SKT | SKT |
| D0.2 | 16.11.18 | ORDER LIMITS UPDATED | JL | SKT | ADR |
| D0.1 | | FIRST ISSUE | | | |

| REV | DATE | DESCRIPTION | BY | CHK | APP |
|-----|------|-------------|----|-----|-----|
|-----|------|-------------|----|-----|-----|

REVISIONS

CLIENT



PROJECT

EAST ANGLIA ONE North

TITLE

ACCESS 11 & 12
GROVE ROAD

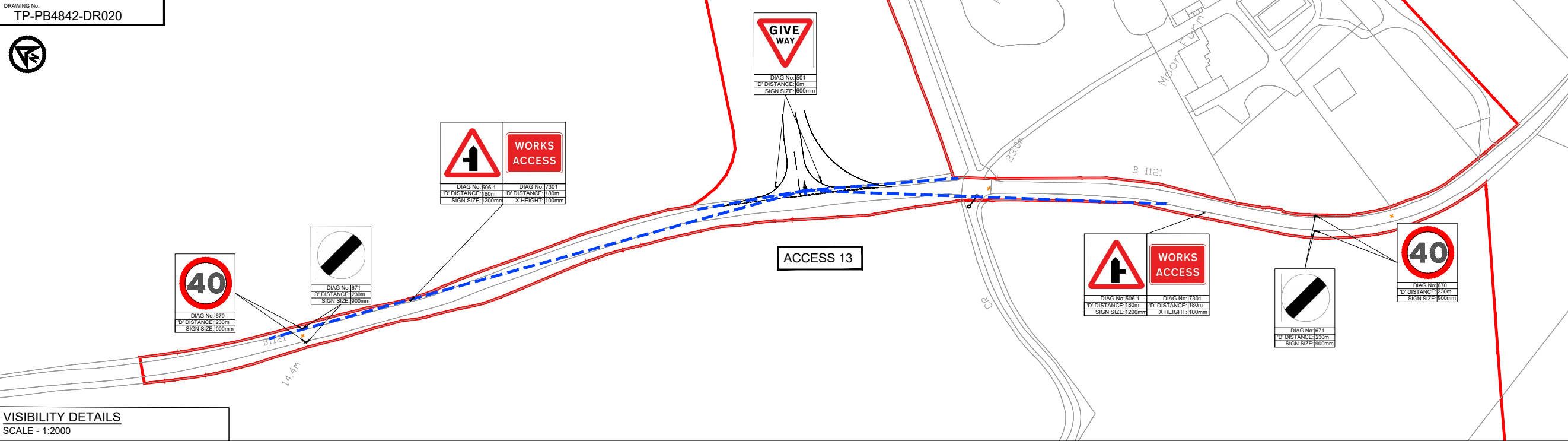


DRAWN JL CHECKED ST APPROVED ADR

DATE 09.10.18 SCALE AT A3 VARIES AUTOCAD REF.

DRAWING No. TP-PB4842-DR014

CLIENT DWG No. REVISION D0.4



VISIBILITY DETAILS
SCALE - 1:2000



ACCESS DETAILS
SCALE - 1:200

- NOTES**
- Do not scale from this drawing, all dimensions are in metres unless noted otherwise.
 - This drawing has been based upon Ordnance Survey Maps and Royal HaskoningDHV can not guarantee the accuracy of data.
- Road markings and signs**
- All road markings and signage to conform with the 'Traffic Signs Regulation and General Directions 2016 and Chapter 8.
 - 'D' distance is the stiling distance of temporary road signs from the closest haul road crossing point/access location.
- Visibility**
- X-distance - the set back from the nearest edge of the carriageway from which the access will be taken
 - Y-distance - the SSD measured along the nearest edge of the carriageway to its intersection with the centreline of the access.
 - SSD - Stopping Sight Distance for design speed of the road.
 - All vegetation to be cleared/trimmed within identified visibility envelope.

KEY

| | |
|--|--|
| | PROPOSED ACCESS BOUNDARY/ROAD MARKINGS |
| | VISIBILITY SPLAY (SEE VISIBILITY TABLE) |
| | PROPOSED TEMPORARY ROAD SIGN |
| | FULL DEPTH CARRIAGEWAY CONSTRUCTION WITH BOUND SURFACE |
| | INDICATIVE ABNORMAL LOAD VEHICLE OVERRUN AREA |

| ACCESS 13 - B1121 | | VISIBILITY | |
|---|-----|------------|-------|
| | | NORTH | SOUTH |
| Posted Speed Limit (PSL) (mph) | | 60 | |
| Required Y-distance SSD for PSL (m) | | 215 | |
| Existing achievable Y-distance SSD (m) | | 247 | 161 |
| Required Y-distance SSD achievable? | Yes | No | |
| 85th percentile speed (mph) | | 43.8 | |
| Required Y-distance SSD for 85th percentile speed (m) | | 160 | |
| Existing Y-distance SSD suitable for 85th percentile speeds | Yes | Yes | |
| Proposed Reduced Speed Limit (RSL) (mph) | | 40 | |

Distances measured on site.

| | | | | | |
|------|----------|---------------------------------|----|-----|-----|
| D0.3 | 24.07.19 | PAGE SIZE CHANGED FROM A3 TO A1 | JL | SKT | SKT |
| D0.2 | 12.06.19 | ORDER LIMITS UPDATED | JL | SKT | SKT |
| D.01 | | FIRST ISSUE | | | |
| REV | DATE | DESCRIPTION | BY | CHK | APP |

REVISIONS

CLIENT



PROJECT

EAST ANGLIA ONE North

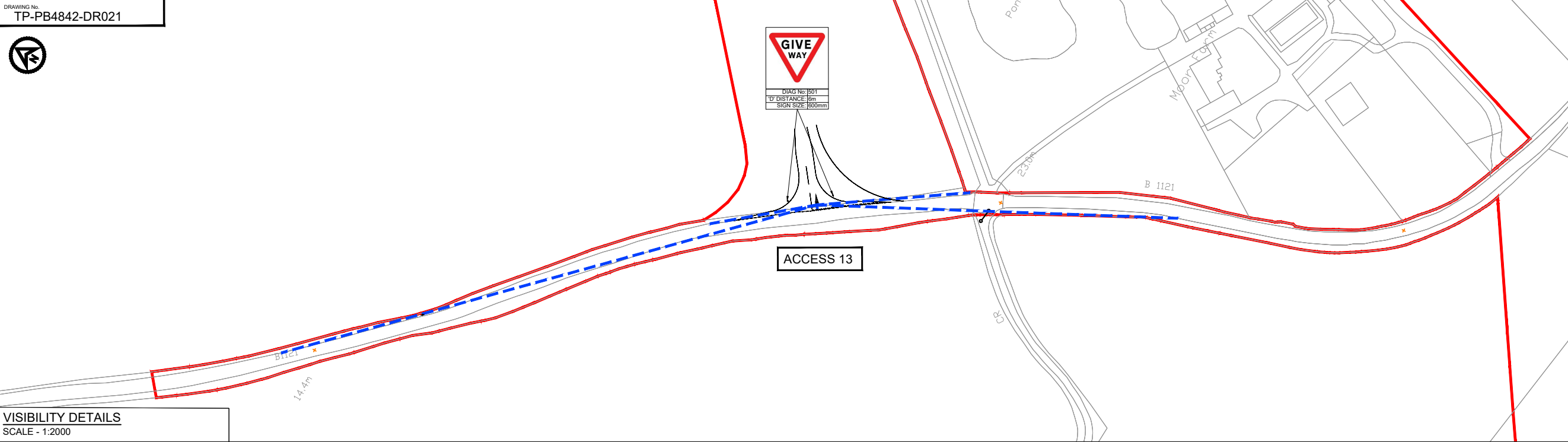
TITLE

ACCESS 13
B1121
CONSTRUCTION PHASE

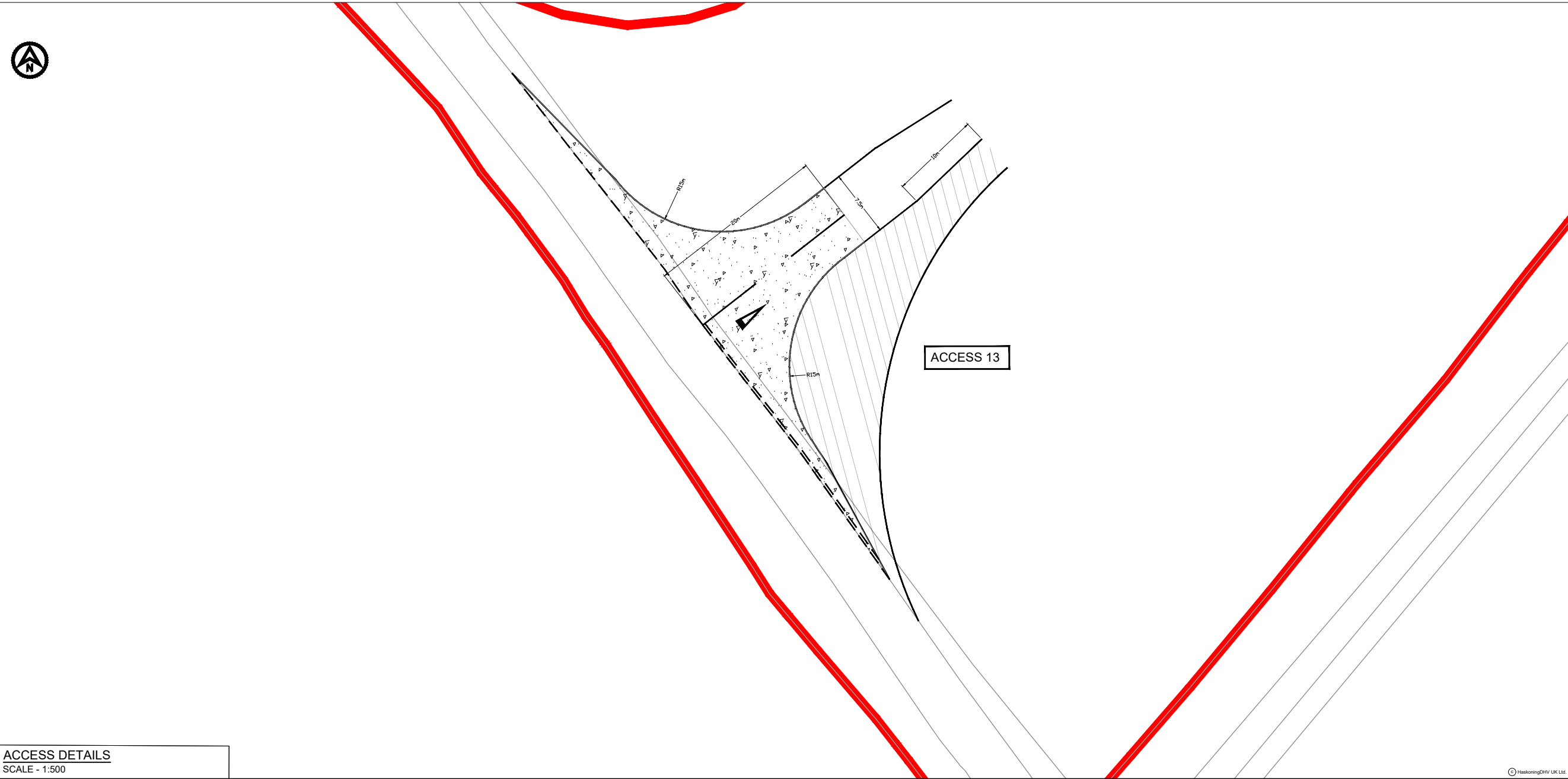


| | | | | | |
|----------------|-----------------|-------------|----------|--------------|----------|
| DRAWN | JL | CHECKED | ST | APPROVED | ADR |
| DATE | 13.11.18 | SCALE AT A3 | VARIABLE | AUTOCAD REF. | |
| DRAWING No. | TP-PB4842-DR020 | | | | REVISION |
| CLIENT DWG No. | | | | | D0.3 |

DRAWING No.
TP-PB4842-DR021



VISIBILITY DETAILS
SCALE - 1:2000



ACCESS DETAILS
SCALE - 1:500

- NOTES**
1. Do not scale from this drawing, all dimensions are in metres unless noted otherwise.
 2. This drawing has been based upon Ordnance Survey Maps and Royal HaskoningDHV can not guarantee the accuracy of data.
 3. All road markings and signage to conform with the 'Traffic Signs Regulation and General Directions 2016 and Chapter 8.
 4. 'D' distance is the stiling distance of temporary road signs from the closest haul road crossing point/access location.
- Visibility**
5. X-distance - the set back from the nearest edge of the carriageway from which the access will be taken
 6. Y-distance - the SSD measured along the nearest edge of the carriageway to its intersection with the centreline of the access.
 7. SSD - Stopping Sight Distance for design speed of the road.
 8. All vegetation to be cleared/trimmed within identified visibility envelope.

KEY

| | |
|--|--|
| | PROPOSED ACCESS BOUNDARY/ROAD MARKINGS |
| | VISIBILITY SPLAY (SEE VISIBILITY TABLE) |
| | PROPOSED ROAD SIGN |
| | FULL DEPTH CARRIAGEWAY CONSTRUCTION WITH BOUND SURFACE |
| | INDICATIVE ABNORMAL LOAD VEHICLE OVERRUN AREA |

| ACCESS 13 - B1121 | | VISIBILITY | |
|---|--|------------|-------|
| | | NORTH | SOUTH |
| Posted Speed Limit (PSL) (mph) | | 60 | |
| Required Y-distance SSD for PSL (m) | | 215 | |
| Existing achievable Y-distance SSD* (m) | | 247 | 161 |
| Required Y-distance SSD achievable? | | Yes | No |
| 85 th percentile speed (mph) | | 43.8 | |
| Required Y-distance SSD for 85 th percentile speed (m) | | 160 | |
| Existing Y-distance SSD suitable for 85 th percentile speeds | | Yes | Yes |

*Distances measured on site.

| | | | | | |
|------|----------|---------------------------------|----|-----|-----|
| D0.3 | 24.07.19 | PAGE SIZE CHANGED FROM A3 TO A1 | JL | SKT | SKT |
| D0.2 | 12.06.19 | ORDER LIMITS UPDATED | JL | SKT | SKT |
| D.01 | | FIRST ISSUE | | | |
| REV | DATE | DESCRIPTION | BY | CHK | APP |

REVISIONS

CLIENT

PROJECT

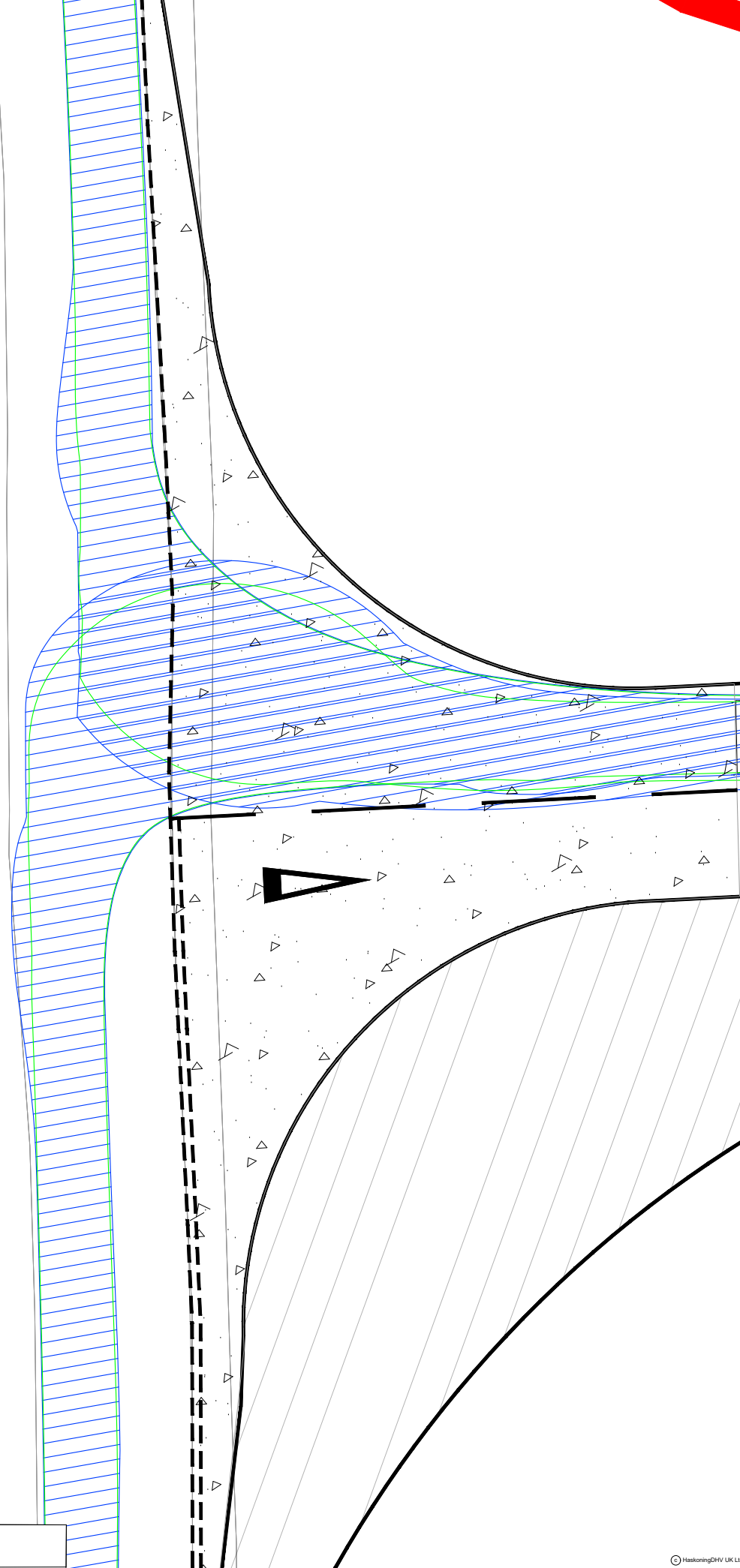
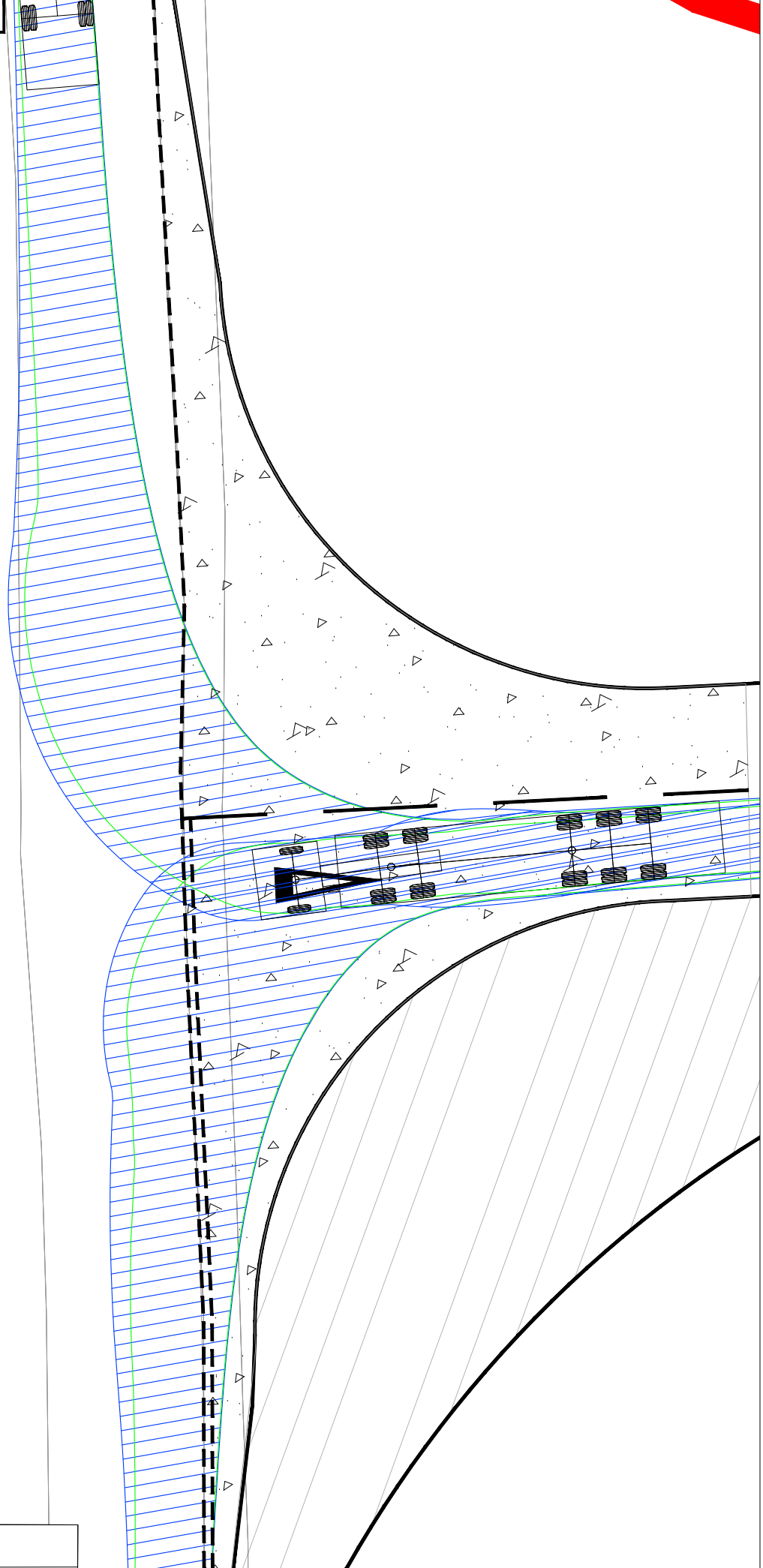
EAST ANGLIA ONE
North

TITLE

ACCESS 13
B1121 OPERATIONAL
PHASE

Enterprise House,
Delta Way, Egham,
Surrey, TW20 8RX
Tel +44(0)1832 569566
www.royalhaskoningdhv.com

| | | | | | |
|-----------------------------|----------|-------------|-----------|--------------|----------|
| DRAWN | JL | CHECKED | ST | APPROVED | ADR |
| DATE | 13.11.18 | SCALE AT A3 | VARIABLES | AUTOCAD REF. | |
| DRAWING No. TP-PB4842-DR021 | | | | | REVISION |
| CLIENT DWG No. | | | | | D0.3 |



NOTES
1. Do not scale from this drawing, all dimensions are in metres unless noted otherwise.
2. This drawing has been based upon Ordnance Survey Maps and Royal HaskoningDHV can not guarantee the accuracy of data.

- KEY**
- ORDER LIMITS
 - PROPOSED ACCESS BOUNDARY/ROAD MARKINGS
 - FULL DEPTH CARRIAGEWAY CONSTRUCTION WITH BOUND SURFACE

VEHICLE TRACKING

Max Legal Length (UK) Articulated Vehicle (16.5m)
Overall Length 16.500m
Overall Width 2.550m
Overall Body Height 3.581m
Min Body Ground Clearance 0.411m
Max Track Width 2.500m
Lock to lock time 6.005s
Kerb to Kerb Turning Radius 6.550m

VEHICLE BODY SWEEP PATH (FORWARD GEAR)
VEHICLE CHASSIS SWEEP PATH

| | | | | | |
|------|----------|-----------------------|----|-----|-----|
| D0.3 | 24.07.19 | DRAWING TITLE AMENDED | JL | SKT | SKT |
| D0.2 | 12.06.19 | ORDER LIMITS UPDATED | JL | SKT | SKT |
| D.01 | | FIRST ISSUE | | | |
| REV | DATE | DESCRIPTION | BY | CHK | APP |

REVISIONS

CLIENT



PROJECT
EAST ANGLIA ONE North

TITLE
ACCESS 13
B1121
MAX ARTICULATED HGV
SWEPT PATH ANALYSIS



| | | | | | |
|----------------|-----------------|-------------|-------|--------------|------|
| DRAWN | JL | CHECKED | SKT | APPROVED | ADR |
| DATE | 13.11.18 | SCALE AT A3 | 1:200 | AUTOCAD REF. | |
| DRAWING No. | TP-PB4842-DR022 | REVISION | | | D0.3 |
| CLIENT DWG No. | | | | | |

This page is intentionally blank